

WS10 Top Fitting Socket

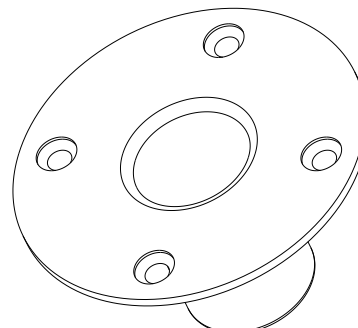
Suitable for WS10 10" 2-way Loudspeaker Cabinet

Technical Datasheet

Last Revision: December 15, 2022 | Revision ID: A

Product Information

Product Colour	Black (RAL 9011)/ White (RAL 9016)
SKU	WS10-FA-B / WS10-FA-W
EAN	697079020 044 4 / 697079020 043 7



Product Overview

The Evoson WS10-FA Top Hat Socket builds in to the base of the WS10 loudspeaker cabinet and allows the speaker to be securely mounted on a speaker stand.

The base plate of the loudspeaker is removed and the top hat socket can be inserted and secured using four fixing points. The adapter can then be used with speaker stands with a maximum tube diameter of 35mm. The speaker stand is not included.

The adapter material is durable welded iron sheet finished with electrostatic spray. This versatile mounting solution is ideal for use in temporary installations, in venues where the interior layout and audio set-up frequently change, or applications where wall and ceiling mounting are not possible.

Technical Specifications

Product Features

Built in Depth	60 mm	
Max Load	30 kg	
Material	Steel	
Colour	Black	White
Compatibility	WS10 Loudspeaker Cabinet	

Evoson reserves the right to change technical specifications and product characteristics without prior notice; this is part of our continued efforts to improve our product range.

Socket Technical Drawings

