

## WS10 Top Fitting Bracket

### Suitable for WS10 10" 2-way Loudspeaker Cabinet Technical Datasheet

Last Revision: December 15, 2022 | Revision ID: A

## Product Information

Product Colour	Black (RAL 9011)/ White (RAL 9016)
SKU	EVO-WS10-TMBB / EVO-WS10-TMBW
GTIN	5056455500324 / 5056455500331
MPN	500324 / 500331



## Product Overview

Evoson™ has designed a series of top mounting brackets for mounting the Evoson PEAKSOUND™ WS range of professional cabinet loudspeakers. The bracket is constructed from solid steel and can be affixed to a ceiling, wall, or other surface using the fixing points on the length of the bracket. Once the speaker is mounted it can then be tilted into the desired position, enabling flexible and accurate sound dispersion.

A corresponding bracket is available for each speaker in the range in either black or white (not including the WS6, WS8, and WS212B). The bracket includes all necessary components for safe and reliable mounting in a variety of indoor applications. Wall-fixings not included.

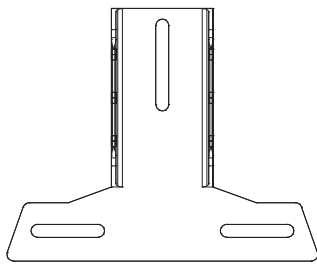
## Technical Specifications

### Product Features

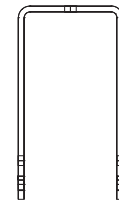
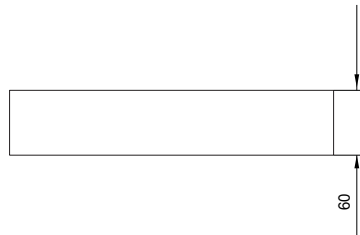
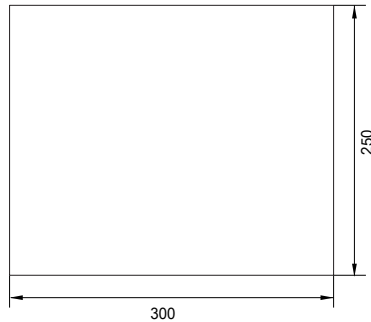
Dimensions ( W x D x H)	300 mm x 220 mm x 520 mm
Max Load	30kg
Material	Steel
Compatibility	WS10 Cabinet Loudspeaker

Evoson reserves the right to change technical specifications and product characteristics without prior notice; this is part of our continued efforts to improve our product range.

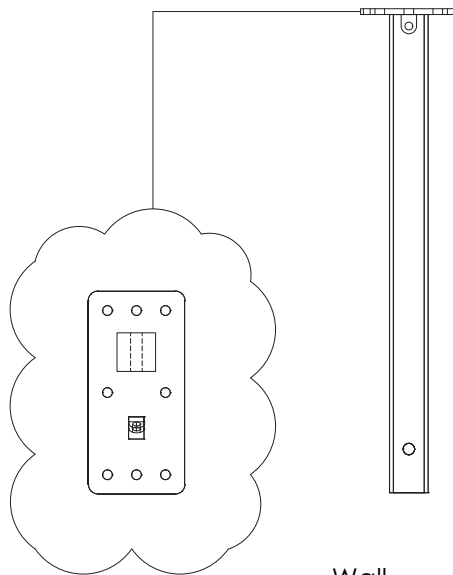
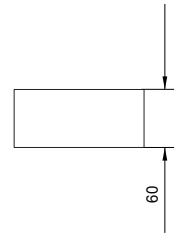
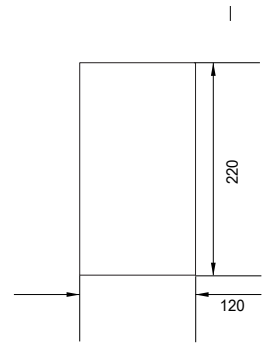
# Bracket Technical Drawings



10"  
Speaker  
Plate



U  
Coupler



Wall  
Bracket &  
Wall Arm

